

VBLED

Art.Nr.: 43035

4-Key Panel RF Remote Controller



CE RoHS EMC LVD RED

Features

- Apply to single color LED controller.
- Each remote can match one or more receiver
- CR2032 battery powered.
- Removeable and stick anywhere easily , or mount on wall use panel base.

Technical Parameters

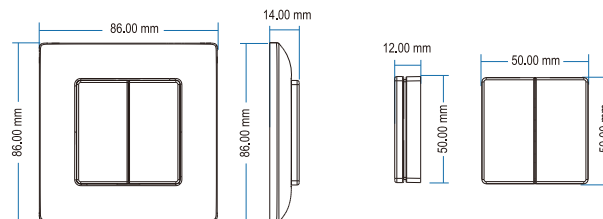
Input and Output	
Output signal	RF(2.4GHz)
Working voltage	3VDC(CR2032)
Working current	< 5mA
Standby current	< 2μA
Standby time	2 years
Remote distance	30m(Barrier-free space)

Warranty	
Warranty	2 years

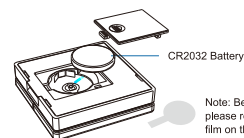
Safety and EMC	
EMC standard (EMC)	EN301 489, EN 62479
Safety standard(LVD)	EN60950
Radio Equipment(RED)	EN300 328
Certification	CE, EMC, LVD, RED

Environment	
Operation temperature	Ta: -30°C ~ +55°C
Case temperature(Max.)	Tc: +85°C
IP rating	IP20

Mechanical Structures and Installations

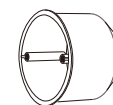


Replace battery:

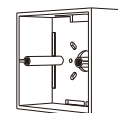


Note: Before the first use, please remove the protective film on the battery.

Typical base as below:

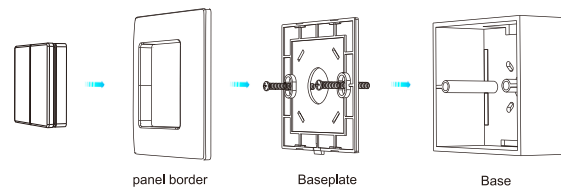


European style



86 size

Installation diagram:

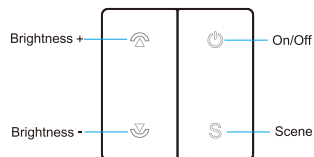


To fix the panel, two options are offered for selection:

Option 1: fix it on the wall with two screws.

Option 2: adhere it to the wall with paster

Key function



On/Off: Turn on or off light.

Brightness+/-: Adjust brightness
Short press 10 levels,
long press 1-6s for continuous 256 levels adjustment

Scene: Brightness memory.
Short press recall the scene,
long press 2s save the current brightness into the scene.

Match Remote Control (two match ways)

End user can choose the suitable match/delete ways. Two options are offered for selection:

Use the controller's Match key

Match:
Short press match key,
immediately press on/off key on the remote.
The LED indicator fast flash a few times
means match is successful.

Delete:
Press and hold match key for 5s to delete all match,
The LED indicator fast flash a few times
means all matched remotes were deleted.

Use Power Restart

Match:
Switch off the power, then switch on power again,
immediately short press on/off key 3 times on the remote.
The light blinks 3 times means match is successful.

Delete:
Switch off the power, then switch on power again,
immediately short press on/off key 5 times on the remote.
The light blinks 5 times means all matched remotes were
deleted.

Safety information

1. Read all instructions carefully before you begin this installation.
2. When installing battery, pay attention to the battery positive and negative polarity.
A long time without the remote control, remove the battery
When remote distance becomes smaller and insensitive, replace the battery.
3. If no response from the receiver, please re-match the remote.
4. Gently handle remote, beware of falling.
5. For indoor and dry location use only

Barite International GmbH
Neidenburger Str.9
28207 Bremen Germany
<https://www.barite.de>