

VBLED Art.Nr.43041

Wall Mounted Touch Panel



CE RoHS LVD

Features

- Touch panel RGBW PWM constant voltage controller.
- Ultra sensitive high strength glass touch panel with touch color wheel in the middle and backlighting.
- Touch keys with LED indicator.

Technical Parameters

Input and Output	
Input voltage	12-24VDC
Input current	12.5A
Output voltage	4 x (12-24)VDC
Output current	4CH,3A/CH
Output power	144-288W
Output type	Constant voltage
Light type	RGBW

Safety and EMC	
EMC standard (EMC)	EN301 489,EN 62479
Safety standard(LVD)	EN60950
Radio Equipment(REDE)	EN300 328
Certification	CE,EMC,LVD,RED

Environment	
Operation temperature	Ta: -30°C ~ +55°C
Case temperature (Max.)	Tc: +85°C
IP rating	IP20

Warranty and Protection	
Warranty	5 years
Protection	Reverse polarity Over heat Short circuit

Weight	
Net weight	0.118kg
Gross weight	0.230kg

Key function



⏻ — Turn on/off light.

🌈 — Color wheel.

% — Adjust dynamic mode speed or static color brightness, 10 levels.

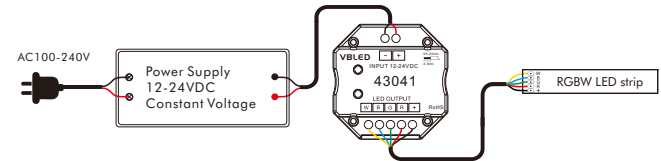
M — Short press play 10 built-in dynamic mode, long press 2s run mode-cycle.

1 2 3 4 — 4 Scenes, short press recall scene.
Long press 2s to save the current color into 1/2/3/4.

R G B W — Short press get red, green, blue, white color,
long press adjust each color brightness.

Turn on key tone: Long press power key for 5s when light is off, will turn on or turn off key tone.

Wiring diagram



LED power supply voltage and power select :

- 12V lamp, Input 12V power supply, can load 0~144W,
- 24V lamp, Input 24V power supply, can load 0~288W, The power supply power must larger than load power 20%.

Match Remote Control (two match ways)

The touch panel controller can also match with the RF remote (optional).
End user can choose the suitable match/delete ways. Two options are offered for selection:

Use On/Off key

Match:
Turn on light, turn off, immediately press the On/Off key of the panel for 5s, then press on/off key (single zone remote) or zone key (multiple zone remote) of the RF remote within 5s.
The LED indicator fast flash 3 times means match is successful.

Delete:
Turn on light, turn off, immediately press the On/Off key of the panel for 10s, delete all matched RF remote.
The LED indicator fast flash 6 times means all matched remotes were deleted.

Use Power Restart

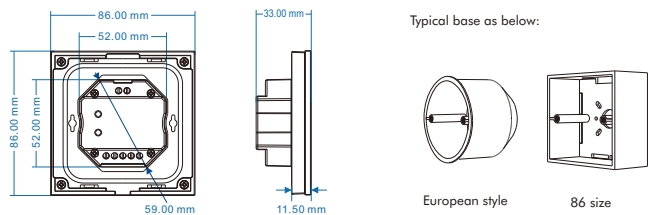
Match:
Switch off the power, then switch on power again, immediately short press on/off key (single zone remote) or zone key (multiple zone remote) 3 times on the remote.
The light blinks 3 times means match is successful.

Delete:
Switch off the power, then switch on power again, immediately short press on/off key (single zone remote) or zone key (multiple zone remote) 5 times on the remote.
The light blinks 5 times means all matched remotes were deleted.

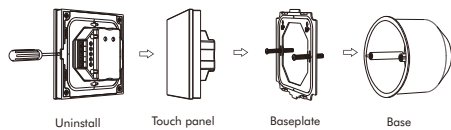
RGBW dynamic mode list

No.	Name	No.	Name
1	RGB jump	6	RGB fade in and out
2	RGB smooth	7	Red fade in and out
3	6 color jump	8	Green fade in and out
4	6 color smooth	9	Blue fade in and out
5	Yellow cyan purple smooth	10	White fade in and out

Mechanical Structures and Installations



Installation diagram:



Barite International GmbH
 Neidenburger Str.9, 28207 Bremen Germany
 Tel: 0421 59702112
<https://www.barite.de>