

# VBLEED

## Ultrathin RF Remote Controller

1 zone RGB or RGBW/27 key/Wireless remote 30m distance/CR2032 battery



Art.Nr.: 43037

CE RoHS LVD RED

### Features

- Apply to RGB or RGBW LED controller.
- Each remote can match one or more receiver.
- C R2032 battery powered.
- Operate with LED indicator light.

### Technical Parameters

| Input and Output |                         |
|------------------|-------------------------|
| Output signal    | RF(2.4GHz )             |
| Working voltage  | 3 VDC (CR2032 )         |
| Working current  | < 5mA                   |
| Standby current  | < 2 μA                  |
| Standby time     | 2year                   |
| Remote distance  | 30m(Barrier-free space) |

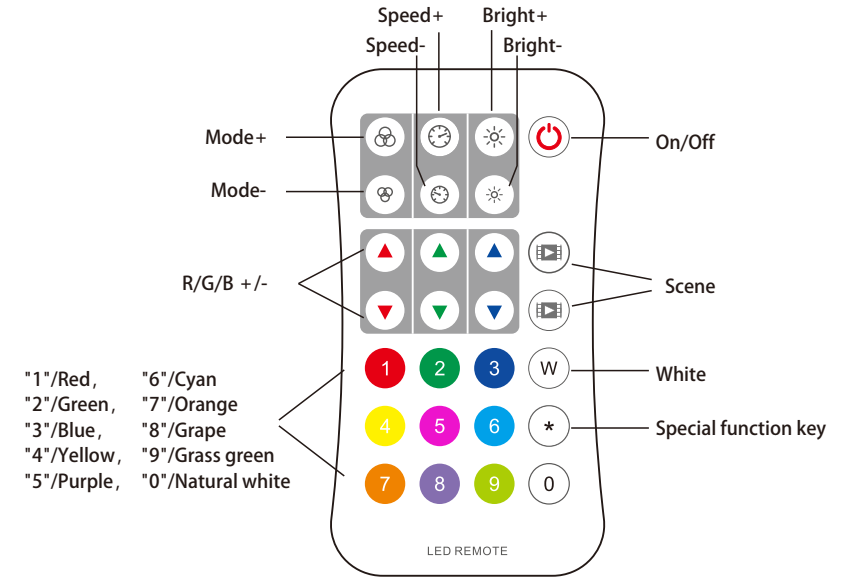
| Environment          |                     |
|----------------------|---------------------|
| Operationtemperature | Ta: -30 °C ~ +55 °C |
| IP rating            | IP20                |

| Safety and EMC       |                    |
|----------------------|--------------------|
| EMC standard (EMC)   | EN301 489,EN 62479 |
| Safety standard(LVD) | EN60950            |
| Radio Equipment(RED) | EN300 328          |
| Certification        | CE,EMC,LVD,RED     |

| Warranty |         |
|----------|---------|
| Warranty | 5 years |

| Weight       |          |
|--------------|----------|
| Net weight   | 0.034KGS |
| Gross weight | 0.058KGS |

### Key function



**Mode+/-:** Short press switch dynamic mode builtin controller  
long press 2s Mode+ run mode cycle, long press 2s Mode- run the first mode.

**Speed+/-:** Adjust dynamic mode speed,  
short press 10 levels, long press 2s get the fastest / slowest speed.

**Bright+/-:** Adjust brightness,  
short press 10 levels, long press 1-6s for continuous 256 levels adjustment.

**R/G/B +/-:** Adjust R/G/B brightness respectively,  
short press 10 levels, long press 1-6s for continuous 256 levels adjustment to achieve millions of colors.

**White:** Adjust white color,  
For RGB light, short press turn on/off white(RGB mix),  
long press 1-6s adjust saturation continuously.  
For RGBW light, press W key will adjust W channel brightness.  
short press turn on/off W channel,  
long press 1-6s adjust W channel brightness continuously.

**Scene:** Shortpressrecall the scene,longpress 2s savethe current color into the scene  
the LED indicator will light up longer when save OK.

## Use the remote set SPI digital LED strip

- Set LED strip length [Pixel number(8~1024)]. + 3 number + \* for example:
  - \*032\*, set pixel number to 32
  - \*600\*, set pixel number to 600
  - \*1024\*, set pixel number to 1024.
- Set LED strip chip type: + 2 number + \*
  - \*11\*: TM1803
  - \*12\*: TM1809, TM1804, TM1812, UCS1903, UCS1909, UCS1912, UCS2903, UCS2909, UCS2912, WS2811, WS2812
  - \*13\*: TM1829
  - \*14\*: TLS3001, TLS3002
  - \*15\*: GW6205
  - \*16\*: MBI6120
  - \*17\*: TM1814B(RGBW)
  - \*18\*: SK6812(RGBW)
  - \*19\*: UCS8904B(RGBW)
  - \*21\*: LPD6803, LPD1101, D705, UCS6909, UCS6912
  - \*22\*: LPD8803, LPD8806
  - \*23\*: WS2801, WS2803
  - \*24\*: P9813
  - \*25\*: SK9822
  - \*31\*: TM1914A
- Set LED strip RGB order\* + 1 number + \*
  - \*1\*: RGB, \*2\*: RBG, \*3\*: GRB, \*4\*: GBR, \*5\*: BRG, \*6\*: BGR.

## Match Remote Control (two match ways)

End user can choose the suitable match/delete ways. Two options are offered for selection:

### Use the controller's Match key

**Match:**  
Short press match key immediately press on/off key on the remote.  
The LED indicator fast flash a few times means match is successful.

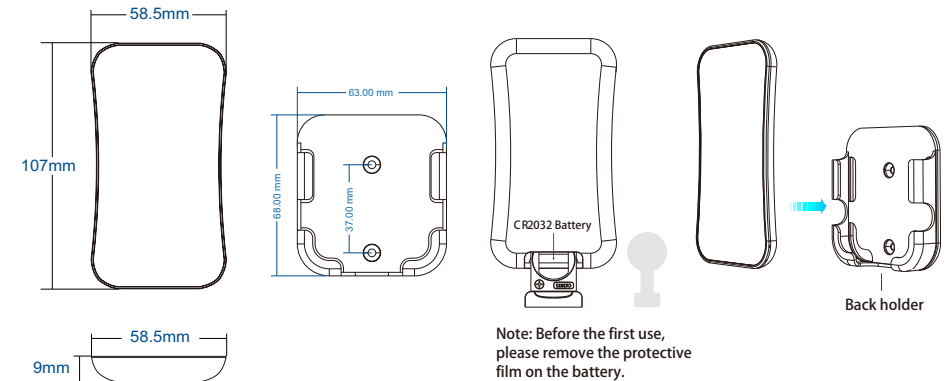
**Delete:**  
Press and hold match key for 5s to delete all match,  
The LED indicator fast flash a few times means all matched remotes were deleted.

### Use Power Restart

**Match:**  
Switch off the power, then switch on power again, immediately short press on/off key 3 times on the remote.  
The light blinks 3 times means match is successful.

**Delete:**  
Switch off the power, then switch on power again, immediately short press on/off key 5 times on the remote.  
The light blinks 5 times means all matched remotes were deleted.

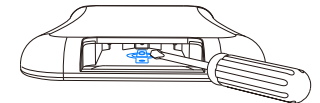
## Mechanical Structures and Installations



To fix the remote, two options are offered for selection:

- Option 1: fix the remote' back holder on the wall with two screws.
- Option 2: adhere the remote' back holder to the wall with paster

Note: If the LED indicator is not on when press, key it is due to dead battery or bad contact caused by multiple plugging, please replace the battery, or raise the battery shrapnel with a screwdriver.



## Safety information

1. Read all instructions carefully before you begin this installation.
2. When installing battery, pay attention to the battery positive and negative polarity.
  - A long time without the remote control, remove the battery.
  - When remote distance becomes smaller and insensitive, replace the battery.
3. If no response from the receiver, please re-match the remote.
4. Gently handle remote, beware of falling.
5. For indoor and dry location use only.

Barite International GmbH  
Neidenburger Str.9  
28207 Bremen, Germany